



B/S
SPANGE
Magnet

MULTI-APPLICATOR

B/S
SPANGE
Magnet+

MULTI-APPLICATOR

Instruction

A step-by-step guide

Instruction - B/S brace Magnet and Magnet+

A step-by-step guide

Points to note before treatment

The B/S brace must not be applied to diseased nails, e.g., fungal disease, psoriasis, onycholysis, etc.

- No footbaths
- No disinfectants
- No application of oils or lotions
- No nail polish remover
- No wet grinding!

Points to note after treatment

- Seal the affixed B/S brace with our B/S glue.
- The sealant is resistant to acetone or nail polish remover.
- Final treatments can only be carried out after sealing, e.g., applying lotion, oil, nail polish, tamponade or wound care.

training video

If you prefer to watch a video, you are welcome to visit our website:

www.bs-spange.de/en/bs-brace/training-videos



How do I scan a QR Code?

Open the camera or a QR code scanner app on the smartphone. Hold the camera over the QR code. A link will appear, please tap it and now you can select the appropriate training video.

Further important notes

- The batch number of the glue can be found on the cap and is the expiration date. **Example: batch number 1025, expiration date October 2025.**
- Do not wipe the brush of the glue on the neck of the bottle as this will result in the cap getting glued.
This also makes sure you have the perfect amount of glue.
- The glue and the activator must not come into contact with each other to avoid negative consequences:
 - › The shelf life of the glue will be shorter
 - › The glue will get stringy
 - › The bottle content will dry up
- Freeze the glue! The shelf life of the glue is extended by the time it is kept in the freezer. **CAUTION: The glue must be applied at room temperature, approx. 21° to 24° C. Please also ensure that the B/S adhesive is applied at an air humidity of at least 40%, as it no longer polymerizes below 40%.**
- Test the activator: Run the pen over a sheet of paper. If it releases liquid, it is still working. **Important: Always close the activator pen tightly!**
- If the tensile force of the brace is too strong after affixing it, just carefully grind both ends of the brace thinner. If necessary, grind the entire brace thinner.



1. Preparing the nail

For the firm and secure fixing of the B/S brace, it is necessary to grind and roughen the nail plate. Thick nails should be filed down to make them thinner.

Use a diamond or corundum grinder to roughen the surface of the nails.



2. Degreasing

Degrease the entire nail surface with one drop of B/S cleaner on a swab.

Wipe the nail dry with the dry part of the swab.



3. Applying B/S activator

Now apply a layer of the activator across the nail with the B/S aen.

The activator is necessary for the secure and immediate bonding of the adhesive.



4. Determining B/S brace size

All B/S brace sizes are labelled on the concave surfaces of the long sides of the applicator. Simply place these on the nail to determine the perfect size of the brace. The measuring surface must not reach into the nail plate and must not be too short. This ensures that the brace does not come into contact with the nail plate.

The optimal placement

The best result with the B/S brace is achieved when the B/S brace is affixed 1 to 2 mm behind the affected area. This allows the nail to grow over the problem area without causing pain and correcting the nail.



5. Marking the nail centre

The centre of the relevant brace size is marked by a notch in the curved section of the multi-appliator. Use this to also mark the centre of the nail with a pencil. This makes it easier for you to optimise the orientation of the B/S brace.



6. Preparing the B/S brace

Using a diamond or corundum grinder, grind the ends (approx. 2 to 4 mm) of the B/S brace thinner on the rough side.

Through this, the ends can be pressed on the nail more easily and do not stick out.

You can find out more about the alternative method on our website www.bs-sponge.de.



7. Picking up the B/S brace

Pick up the prepared B/S brace with the multi-applicator so that the centre line of the brace's magnetic point is in contact with the applicator's magnet.

Use the middle mark on the multi-applicator as a guide.

This ensures that the brace does not extend beyond the side edge of the nail.

Important: The rough side of the brace is placed on the already roughened nail.



8. Applying B/S glue

Apply a drop of glue in the centre of the magnetic point of the brace without spreading it.

Hint:

Our instruction is based on the standard size 18. The larger the B/S brace, the more glue is needed.

Possible alternative: Apply the glue directly to the nail and the activator to the brace.



9. Turning the applicator

Turn the applicator upside down. Please do not turn over the side. This will prevent the glue from running onto the end of the brace and sticking to the applicator.



10. Centre fixation

Now press the B/S brace onto the centre of the nail for approx. 10 to 15 seconds. Use the previously marked pencil line as a guide.

Then carefully lift the applicator off the affixed brace.



11. Fixation of the brace ends

Now use the pressure tool on the opposite side of the applicator. To do this, press the sticking end inside the brace against the nail for approx. 10 to 15 seconds with one side of the pressure tool.

Carefully lift the applicator from the glued side and repeat the process on the other end of the brace.

Make sure that the ends of the B/S brace are in contact with the nail and are not sticking out.

If there is not enough glue under the brace, you can apply some more glue under an outstanding brace end.



12. Cleaning the nail with B/S cleaner

Before sealing, remove the activator and the magnetic point of the brace. To do this, apply several drops of B/S cleaner to a swab and clean the entire nail plate.

Caution: The activator must not come into contact with the glue, otherwise the glue will dry out, pull threads or shorten the durability.



13. Individually adjusting tension forces

If your patient feels an unpleasant pulling or tension pain after affixing the B/S brace, the tension is too strong.

In this case, you have to gently grind the ends of the affixed B/S brace thinner or, if this does not approve sufficient, the entire B/S brace.

Your advantage:

Corrective adjustments to the B/S brace can be made on the nail!

The patient feels the correction immediately.

Brace ends sticking out can be ground off if less than 1 mm.



14. Final sealing

To achieve a secure and water-resistant fixation, use the B/S glue to seal the nail with the already bonded B/S brace.

This sealing does not come off with acetone or nail polish remover!

Spread the B/S glue quickly over the entire nail surface like nail polish.



15. Further treatment

Once the sealant is dry (after approx. 5 minutes), standard nail care can be continued:

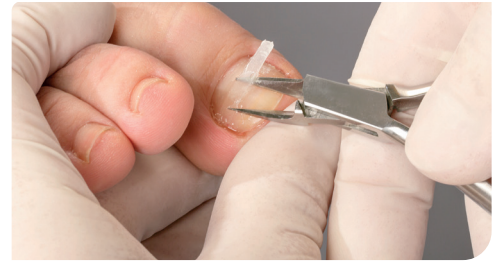
- Tamponing of the nail fold
- Ointment dressings
- Applying nail polish
- Footbaths
- Applying lotions and oils



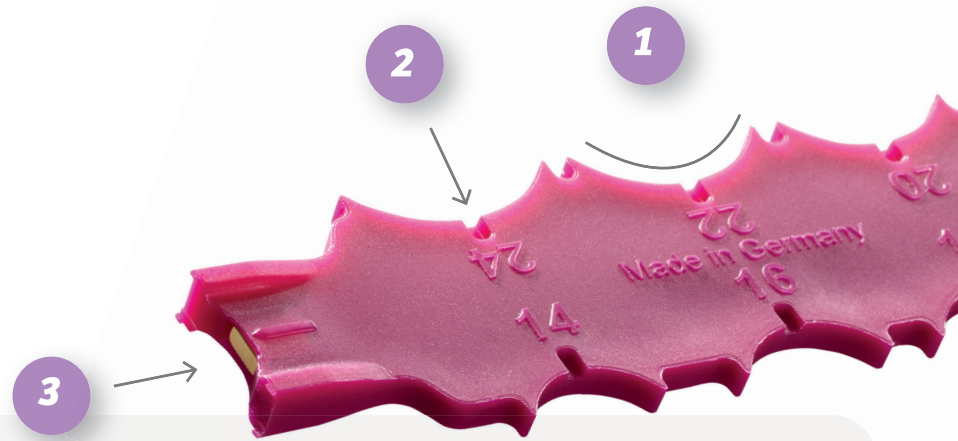
16. Removing the B/S brace

It is best to use straight blade nail pliers to remove the B/S brace. Place the pliers at one edge 'between the brace and the nail'!

This allows you to simply break the bond and carefully remove the brace from the nail. The glue, which acts as a sealant, can then be milled off the nail.



Shaping



1

Measuring tool

By placing the relevant measuring tools on the toe nail, all six sizes of the braces can be determined effortlessly.

2

Middle marking

To determine the centre of the nail, there is a marking on each measuring surface. A notch allows the nail to be easily marked with a pencil.

3

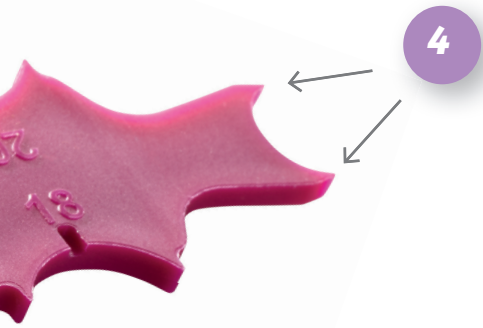
Centre fixation

The magnetic attachment surface can be used universally for braces of any size. Thanks to an integrated centre marking, fixing the brace is particularly easy. The brace is fixed in the centre of the toenail by pressing it firmly onto the toenail.

4

Fixation tool

After the centre fixation of the B/S brace, the outstanding ends are pressed on using the opposing fixation tool.



Cleaning the applicator

You can clean the sticky application surfaces of the applicator by soaking them in acetone for approx. 10 minutes and grinding away outstanding brace ends if less than 1 mm.

Optimisation of the corrective treatment

The best correction of an ingrown nail is achieved when a new B/S brace is applied **every 4 weeks**.

It can also stay affixed to the nail for a longer time - until it comes off by itself. However, it has **little to no lifting force after 4 weeks**.


If necessary and if there is enough space between the nail root and the first B/S brace, a second B/S brace can be affixed to the space after one month or later.

Caution: Pay attention to the lifting forces when using two B/S braces.

Space for notes

Absolutely Original,

for over 35 years.

 berndstolzgmbh

 bsspange

Bernd Stolz GmbH

Fuggerstraße 36 a
D-92224 Amberg

+49 96 21 / 22 1 88
info@bs-spange.de

www.bs-spange.de
www.shop.bs-spange.de